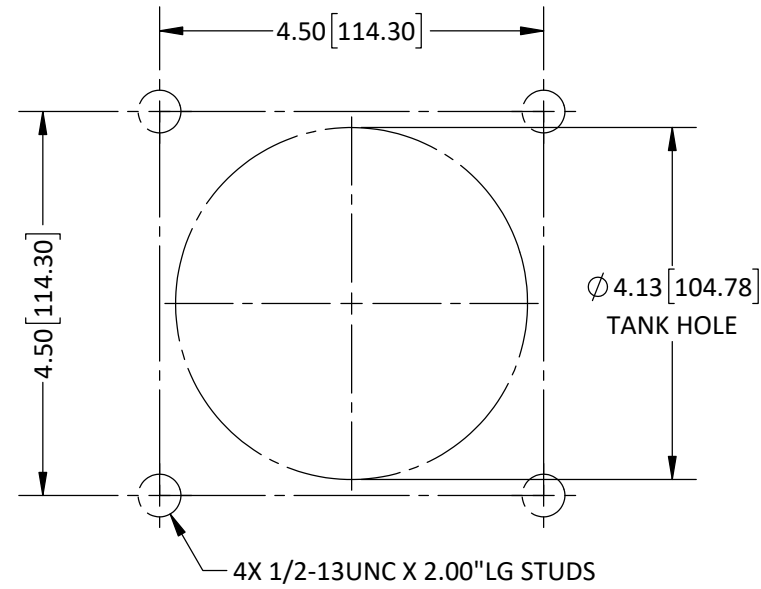


REVISIONS					
REV.	DATE	ECN #	DESCRIPTION	BY	APP'D
1	12/9/2020	HJ20-304	ADDED GASKET THICKNESS AS REFERENCE	CLS	LO

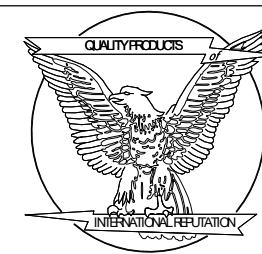
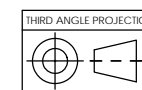
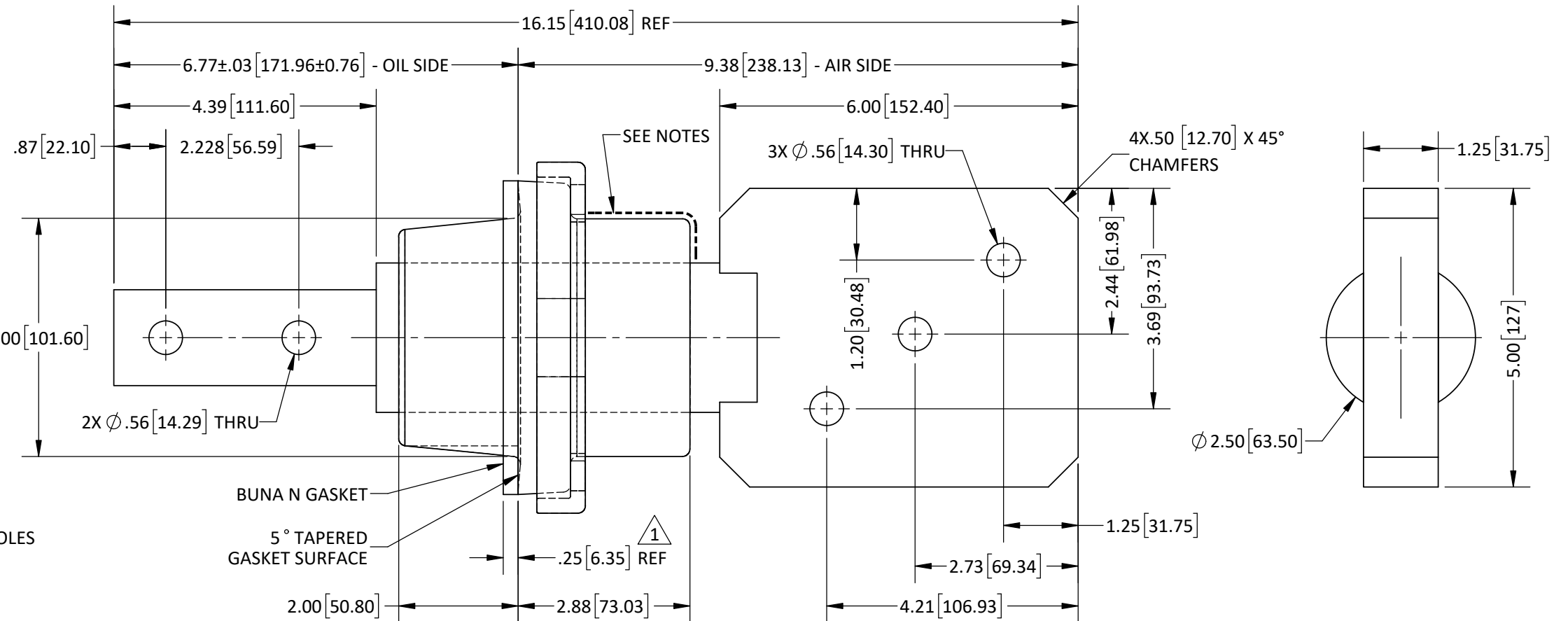
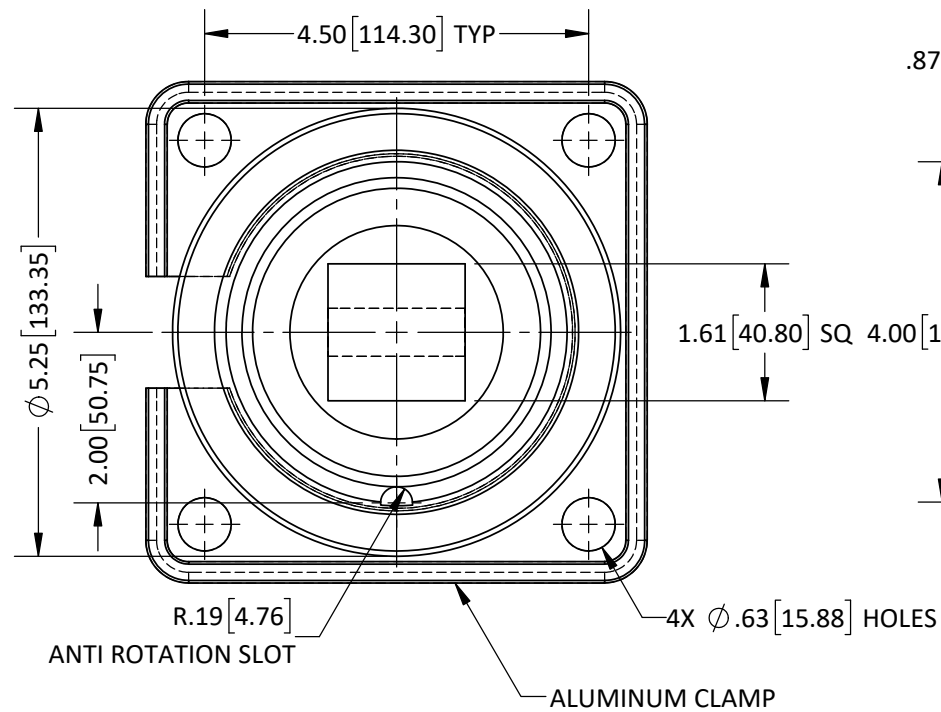
- NOTES:**
1. ALL UNSPECIFIED RADII TO BE R0.125
  2. ALL CONTACT SURFACES TO BE CLEAN & FREE FROM FLASH
  3. RATINGS BASED ON SIDE MOUNTED BUSHINGS WITH OIL IMMERSED SHANK AND SUITABLE TERMINATION AND LEAD CONNECTIONS

- MATERIAL:**
1. E04 - BISPHENOL-A EPOXY, GREY (UV SHIELDED)
  2. E07 - CYCLOALIPHATIC, GREY (UV EXPOSED)
  3. HD ETP C11000 COPPER (CONDUCTOR), TIN PLATED
  4. 356.1 CAST ALUMINUM (CLAMP)

- SPECIFICATIONS:**
1. BASIC IMPULSE LEVEL.....45kV
  2. CONTINUOUS CURRENT RATING.....5200A
  3. TEMPERATURE CLASSIFICATION.....E04: -40 °C -TO- 120 °C  
E07: -40 °C -TO- 105 °C
  4. TOTAL CREEP DISTANCE.....2.46" [62.48mm]



**RECOMMENDED MTG  
DETAIL**



**H-J INTERNATIONAL, INC.**  
3010 HIGH RIDGE BLVD, HIGH RIDGE, MO. 63049 USA  
PHONE 1-636-677-3421 FAX 1-636-376-1915

1004 SERIES - 2.5kV  
LV BUSHING  
5200 AMP (MAX.)

**PROPRIETARY AND CONFIDENTIAL**  
THE INFORMATION CONTAINED IN THIS DRAWING IS THE SOLE PROPERTY OF H-J INTERNATIONAL, INC. ANY REPRODUCTION IN PART OR AS A WHOLE WITHOUT THE WRITTEN PERMISSION OF H-J INTERNATIONAL, INC. IS STRICTLY PROHIBITED.

BREAK ALL SHARPS  
UNLESS OTHERWISE NOTED

**TOLERANCES**  
(EXCEPT AS NOTED)

ONE PLACE MM ±1.50  
TWO PLACE MM ±0.75  
TWO PLACE DEC. ±.060  
THREE PLACE DEC. ±.030  
FRACTIONS ± 1/16"  
ANGLES 2°

APPROVED BY	DATE
CHECKED BY	DATE
DRAWN BY T.J.F.	DATE 1/15/2020
TOOL NO.	T10-042-0
PRODUCT GRP.	1000 SERIES

DRAWING NO. 10-042-073					
SCALE 1:2	SIZE B	REV. 1	SHEET 1	OF 1	